



LASER MARKING MACHINE

REACHABLE HIGH QUALITY

PRODUCT MANUAL



MCM
— L A Z E R —

MCM LAZER by GUNESLER

DIRECTORY

01	ABOUT US
02	WHAT IS A LASER MARKING MACHINE
03	MARKING APPLICATION
04	FIBER LASER MARKING MACHINE
06	PORTABLE FIBER LASER MARKING MACHINE
08	DESKTOP SPLIT TYPE LASER MARKING MACHINE
09	CO2 LASER MARKING MACHINE
11	UV LASER MARKING MACHINE
12	FLYING LASER PRINTING MACHINE
13	ENCLOSED LASER MARKING MACHINE
15	PNEUMATIC MARKING MACHINE
18	ACCESSORIES

MCM LAZER by GUNESLER

ABOUT US

As MCM LASER Quality is our priority.

We are working with uncompromising idea from toe to head. We tests our machines at every step of their productions.

We provide full sets marking machines. Main products include; Fiber laser marker/ Co2 laser marker/ Pneumatic dot pin marker/ UV laser marker & all kinds of laser marker parts.

All machine can reach standart of CCC, CE, GS, ISO, SGS, UL

we have 7x24 customer care services

Our machine has at least 2 years of warranty

MCM LASER olarak bizim önceliğimiz kalitedir.

Bizler firma olarak en alttan en üste kadar tavizsiz bir şekilde iş bilinciyle çalışıyoruz. Makinalarımızı üretimin her aşamasında en ince ayrıntılarıyla test edilip oluşabilecek kusurlardan kaçınıyoruz.

Biz full takım olarak markalama makineleri tedarik ediyoruz. Ana ürünler; Fiber lazer markalama/ Co2 lazer markalama/ Pneumatic nokta pin markalama/ UV lazer markalama & bütün lazer markalama parçası.

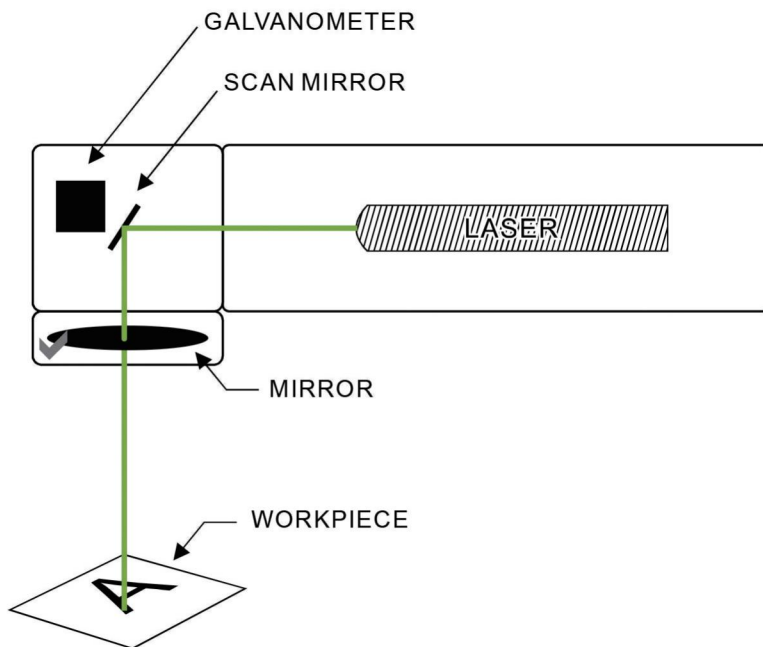
Bütün makinelerimiz CCC, CE, GS, ISO, SGS, UL kalite standartlarına ulaşabilir.

7x24 müşteri servisimiz bulunmaktadır.

Makinalarımız en az 2 yıl garanti kapsamındadır.



WHAT IS A LASER MARKING MACHINE



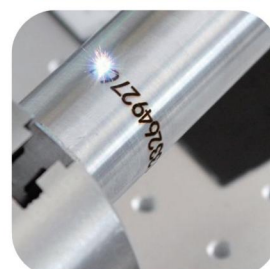
Laser marking technology is one of the largest application fields of laser processing. Laser marking is the use of high energy density laser to irradiate the workpiece locally, so that the surface material vaporizes or changes color.

A marking method that chemically reacts, leaving a permanent mark. Laser marking can print all kinds of text, symbols and patterns, etc. The character size can be from millimeters to micrometers. It has a special meaning for anti-counterfeiting of products.



MARKING APPLICATION

Laser technology has good monochromaticity, coherence, and directionality, and can accumulate a high energy density in a small area, which is particularly suitable for material processing. Laser marking technology has risen quietly in the world, and has been rapidly industrialized, it becomes one of the largest application fields of laser processing. Widely used in pharmaceutical, tobacco monopoly, wine, food and beverage, daily chemical, electronics, card making and other industries, suitable for high-speed printing of Chinese characters on various types of paper, plastic, wood, peritoneal metal, glass, ceramics, etc. English, numbers, batch number, date, LOGO icon, anti-counterfeiting digital, etc.



FIBER LASER MARKING MACHINE

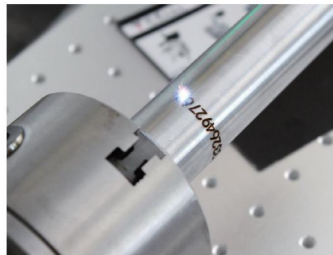
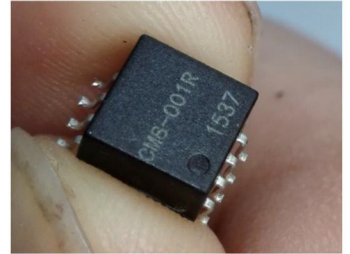
Fiber laser marking machine means that the marking machine uses a fiber laser. The fiber laser has the advantages of small size, good beam quality, and maintenance-free. Widely used in integrated circuit chips, computer accessories, industrial bearings, clocks, electronics and communication products, aerospace devices, various auto parts, home appliances, hardware tools, molds, wires and cables, food packaging, jewelry, tobacco and military affairs Field graphics and text marks.

FEATURES

- ✓ It can process a variety of metal and non-metal materials. In particular, marking high-hardness, high-melting-point, and brittle materials is more advantageous.
- ✓ It belongs to non-contact processing, no damage to products, no tool wear, and good marking quality.
- ✓ The laser beam is thin, the processing material consumption is very small, and the processing heat affected area is small.
- ✓ High processing efficiency, computer control and easy automation.

TECHNICAL PARAMETERS

Beam quality	M2:1.5
Average output power	20 w / 30 w / 50 w
Maximum linear marking speed	8000 mm/s
Laser wavelength	1064 nm
Marking range	70-300 - mm (optional)
Laser repetition frequency	20 KHZ - 80 KHZ, 1-500 KHZ
Minimum character height	The 0.2 mm
Marking depth	> 0.01 mm
Repeat accuracy	The 0.005 mm
Minimum line width	The 0.01 mm
electricity demand	220 v / 50 hz
Power consumption of the whole machine	< 500 w
cooling system	Air cooling



KX 200/300/500

POWER: 20w / 30w / 50w
Total Weight: 600 * 800 * 1450mm



MK 20 / 30 / 50

POWER: 20w / 30w / 50w
Total Weight: 600 * 800 * 1450mm

PORTABLE FIBER LASER MARKING MACHINE



MZF 20B/30B

POWER: 20w / 30w

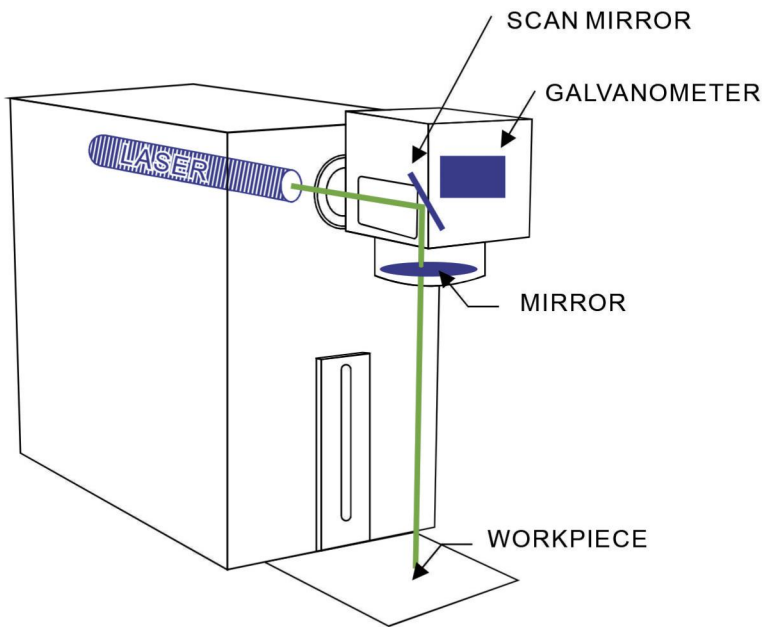


Portable fiber laser marking machine adopts portable integration structure design, develop and become a new generation of laser marking machine. With laser output laser, then through high speed scanning galvanometer system implementation marking function. Optical fiber laser marking mechanical and electrical light conversion efficiency high cooling air cooling way, small equipment volume, the output beam quality is good, high reliability. Can be carved metal materials and some non-metallic materials, optical fiber laser adopts integrated structure, no optical pollution and power decoupling and loss, air cooling, with high efficiency, long life and less maintenance and performance.

MZF 20C/30C

POWER: 20w / 30w





MZF 20D/30D

POWER: 20w / 30w



MZF 20E/30E

POWER: 20w / 30w



MZF 20N/30N

POWER: 20w / 30w



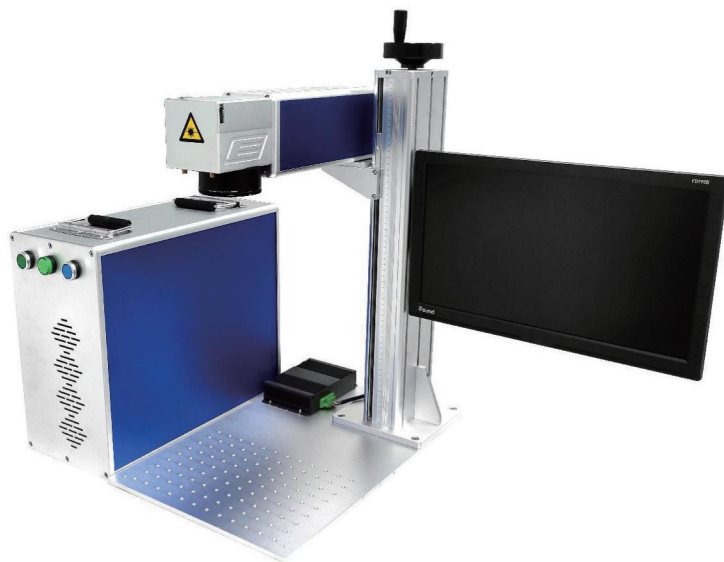
MK series

POWER: 20w / 30w / 50w

DESKTOP SPLIT TYPE LASER MARKING MACHINE

FEATURES

- ✓ Desktop separation design, small size, convenient movement;
- ✓ The machine mechanical structure are all made of aluminum alloy material, light weight, good heat dissipation;
- ✓ Independent research and development control mainboard and marking software, easy to customize and maintain;
- ✓ Any office computer is able to do figure and marking, it saves the graphics transformation between different computers;
- ✓ This machine matches with laptop as control system.



MZF 20N/30N

POWER: 20w / 30w



MZF 20 / 30

POWER: 20w / 30w

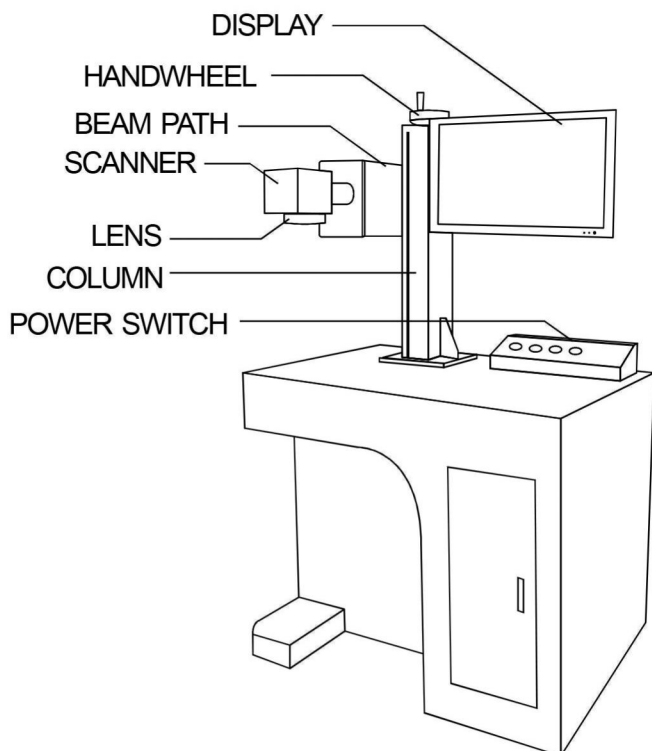


MZF 20A/30A

POWER: 20w / 30w

CO2 LASER MARKING MACHINE

The CO2 laser marking machine uses an infrared light band, a 10.64μm gas laser to fill the CO2 gas into the high-pressure discharge tube to generate a glow discharge, so that the gas molecules release the laser, and the laser energy is amplified to form a laser beam for material processing. , The laser beam vaporizes the surface of the processed body to achieve the purpose of engraving. Co2 laser marking machine can mark a variety of non-metallic materials and some metal products, such as bamboo products, wood, paper ABS PVC epoxy resin, acrylic, leather, glass, building ceramics, rubber and so on. Widely used in pharmaceutical packaging, food packaging, beverage packaging, plastics, textiles, leather, wood, crafts, electronic components, communications, watches, glasses, printing and other industries.





MQC 20T/30T/60T

POWER: 20w / 30w / 60w



MQC 18S/35S/65S

POWER: 20w / 30w / 60w

TECHNICAL PARAMETERS

Beam quality	M2:1.5
Average output power	20 w / 30 w / 50 w
Maximum linear marking speed	8000 mm/s
Laser wavelength	1064 nm
Marking range	70-300 - mm (optional)
Laser repetition frequency	20 KHZ - 80 KHZ, 1-500 KHZ
Minimum character height	The 0.2 mm
Marking depth	> 0.01 mm
Repeat accuracy	The 0.005 mm
Minimum line width	The 0.01 mm
electricity demand	220 v / 50 hz
Power consumption of the whole machine	< 500 w
cooling system	Air cooling

UV LASER MARKING MACHINE

Uv laser marking machine has the advantages of short wavelength, short pulse, excellent beam quality, high precision and high peak power. Therefore, the system has excellent application characteristics in the field of special material processing. The thermal effect can be significantly reduced on the surface of various materials, and the processing accuracy is greatly improved. Suitable for marking applications in all industries.

FEATURES

- ✓ Fine marking, small gathering spot, small heat effect, high demand choice.
- ✓ The marking effect has high engraving precision, and the small line width can reach 0.015mm, which can meet the needs of engraving a large amount of data on a very small workpiece.
- ✓ It is suitable for marking with special materials. The ultraviolet laser marking is cold processing, the beam is delicate, and there is no effect of heating or thermal deformation on the inner layer and the surrounding area of the processed surface.
- ✓ The marking range is wide, and all metals and some non-metals can be marked, which can meet the user's requirements for marking products.



MQ 3A/5A/10A

POWER: 3w / 5w / 10w



MQ 3F / 5F

POWER: 3w / 5w

FLYING LASER PRINTING MACHINE



T 200/300/500

POWER: 20w / 30w / 50w



G 300/600/1000

POWER: 30w / 60w / 100w



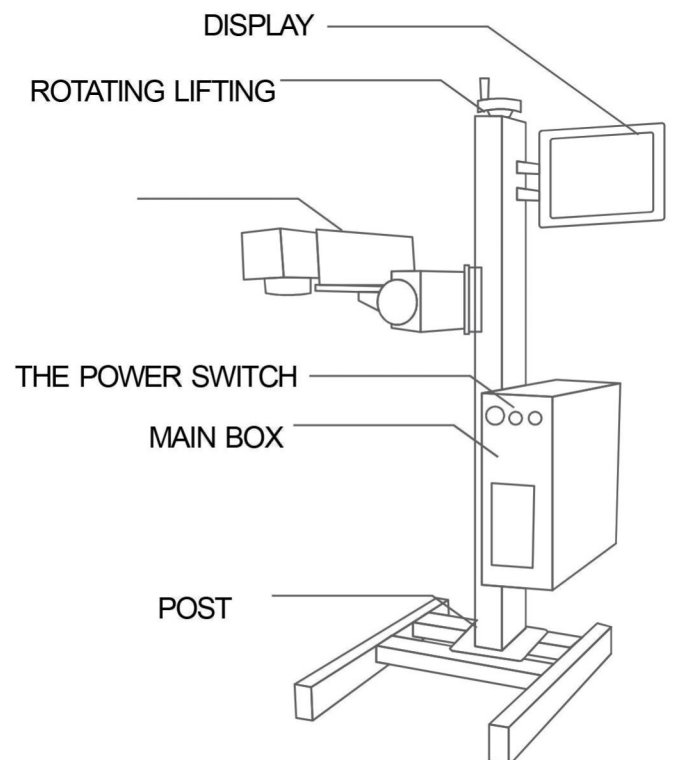
UV 300/500/1000

POWER: 30w / 60w / 100w

Flying marking is an indispensable part in laser processing, which is mainly used in the production date, anti-counterfeiting, pharmaceutical and food packaging industries.

Flying marking is a processing method that uses lasers to process objects on the production line (It means the processing object is moving relative to the laser). This processing method is greatly improved compared to static processing. Processing efficiency is used by more and more users.

The control principle of flying marking is simply to control the movement of the galvanometer to keep the processing object and the processing content (graphics or text) and to achieve the processing effect in a relatively static state.



CUSTOMIZED LASER MARKING MACHINE

CLOSED LASER MARKING MACHINE

The closed laser marking machine is used in private custom shops or laboratories. It is small and does not occupy space, it can be used with a fume purifier.



CUSTOMIZED LASER MARKING MACHINE



3D
LASER MARKING MACHINE



MOPA
LASER MARKING MACHINE



**VISUAL
POSITIONING**
LASER MARKING MACHINE



**CO2 3D DYNAMIC
FOCUSING**
LASER MARKING MACHINE



**XY DUAL
AXIS MOBILE**
LASER MARKING MACHINE



**3D FIBER
LARGE-RANGE**
LASER MARKING MACHINE

PNEUMATIC MARKING MACHINE

Industrial pneumatic marking machine can realize the long-term marking of patterns, text, letters, VIN code, serial number, date and graphics on the workpiece.

APPLICATION FIELD

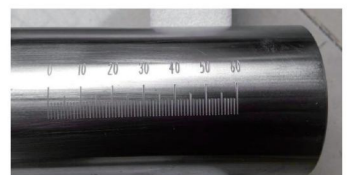
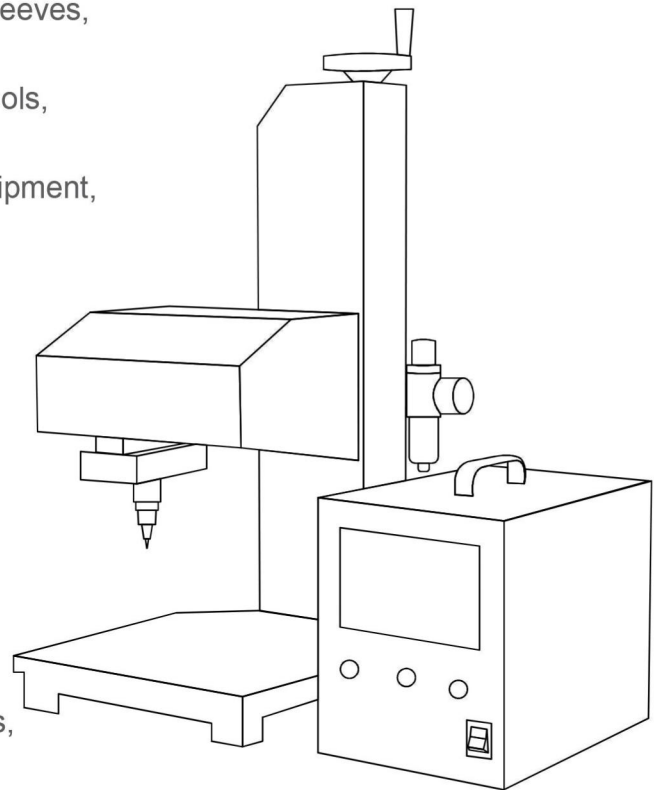
Automotive machinery industry: bearings, steel sleeves, piston rings, engines, machine tools, etc. ;

Hardware equipment industry: tools, measuring tools, cutting tools, sanitary ware, tableware, locks, knives and scissors, medical equipment, fitness equipment, stainless steel products, etc. ;

Decoration label industry: buttons, luggage buckles, belt buckles, gold and silver jewelry, signs, badges, attendance cards, business cards, photos, leather bags, belts, pens and pen cases, collectors, artworks, etc

Electronic communication industry: keyboards, electronic components, home appliance panels, optical cables, cables, etc. ;

Instrument and glasses industry: metal watch cases, watch bottoms, spectacle frames, instrument panels and other areas that require high depth, smoothness and fineness.



FEATURES

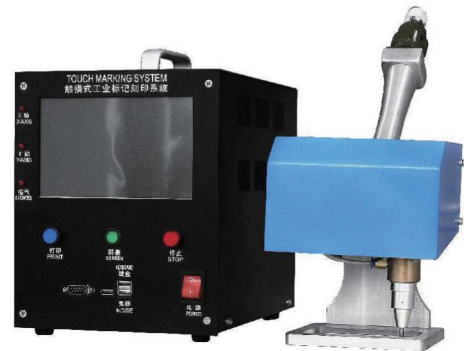
- ✓ High-pressure chain steel base: good quality, heavy and strong, playing a stable role on industrial pneumatic marking machine;
- ✓ Inlet filter pressure regulating valve: adjust the pressure level to fully reduce the impact of upstream pressure fluctuations and ensure the stability of the output pressure;
- ✓ Carbide needles: Industrial pneumatic marking machines can print mechanical parts and signs of most materials;
- ✓ Computer control and the new version of WINDOWS operating system: Chinese and English switching, powerful editing function, industrial pneumatic marking machine can arbitrarily arrange the required characters and graphics;
- ✓ Automatically save the marked content: when the power is abnormally disconnected, the industrial pneumatic marking machine can automatically save the pattern being edited and marked;
- ✓ Support multiple types of fonts: SHX font for Auto, CHR for Borland, TTF for Windows;

**A 23****C 12****TECHNICAL PARAMETERS**

Print range	80 * 140 mm	Print the minimum character	1 mm
The largest print hardness	HRC62	The engine power	300 w.
The print head lifting height	0 ~ 300 mm	The printing speed	1 ~ 3 characters per second
The compressed air pressure	0.3 ~ 0.7 MPa	The environment temperature	- 10°C to 50°C
Repeat print accuracy	The 0.02 mm	System reset number	1000 times
Voltage requirements	220 v / 50 hz	Continuous working time	> 48 hours



A 15



A 10B



A 22S



A 18



A 19



A 22

BENCHTOP CABINETS



PORTABLE CABINETS AND BEAM PATH



DISPLAY & CARD



FIBER LASER



JPT



RAYCUS

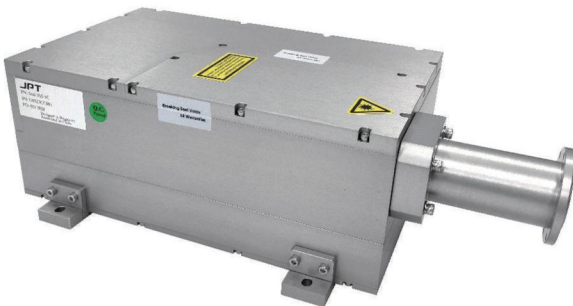


MAX



HFB PHOTONICS

UV LASER



JPT



RFHLASER

SCANNER



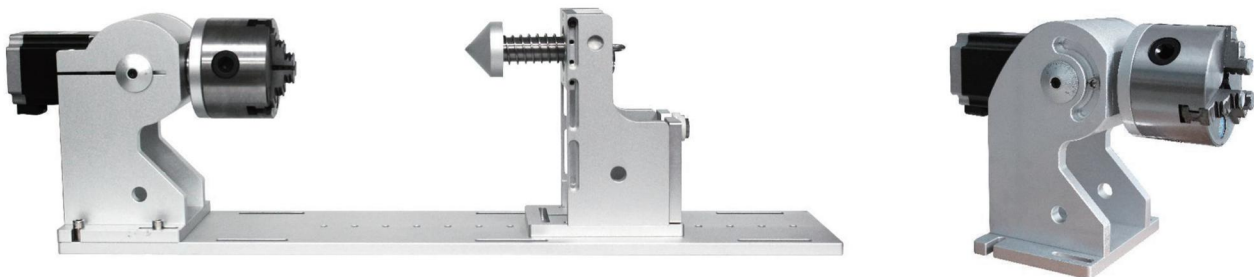
LENS



LIFTING MOVING TABLE



ROTARY DEVICE



GUNESLER

Wappage: www.mcmlazer.com.tr

Tel: 0324 322 16 44

Whatsapp : 0324 60 60 445

Address: Turgut türkalp mahallesi kadirbey apartmani
akbelen bulv. 21/A Toroslar - Mersin

Mail: guneslersulama@gmail.com

mail2: cemal@guneslersulama.com